



Starting School at Armadale Primary School August 2019

We are delighted to welcome you and your child to Armadale Primary School. Starting school is an exciting time and we aim to help you settle happily into school life. This booklet tries to answer some of the most commonly asked questions about starting school. Please feel free to ask if there is anything we have missed out!



How many sleeps until I go to school?



Term dates and school hours for Primary 1

School begins for all P1 children on:

Tuesday 20 August 2019

The boys and girls will be in school for a full day from their first day.

Am: 8.45-12.20pm

Pm: 1.00-3.05pm

School closes for all pupils every Friday at 12.20pm

On the first day we politely request that you bring your child to their classroom. From then on in we request that you watch with pride as they line up in the playground when the bell rings.



Will I get to wear school uniform?

At Armadale Primary School we have a lovely school uniform which all the children wear. Items can be ordered throughout the year from the school office.



School sweatshirts and school polo shirts are embroidered with our school logo.



Sweatshirts: Royal Blue

Polo shirt: White

Trousers/Skirts: Black

Footwear: Black

We kindly request that no football shirts or strips are worn to school.



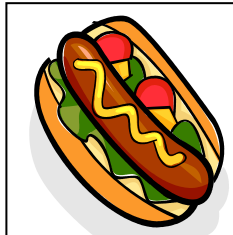
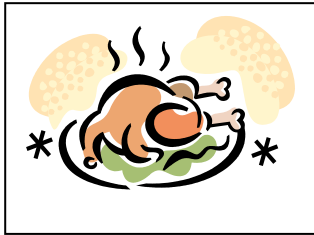
How will my teacher and I recognise my sweatshirt from all the others

We request that all school clothing including PE kit and jackets are named to help us to identify clothing.



When will I begin to have a school lunch?

School lunches are available from Tuesday 20 August. Your child's Buddy will be there to help out in the lunch hall for the first few days.



In West Lothian all schools operate a three tray system in the dinner hall allowing you to choose from two hot meals and a sandwich meal. Please note that on a Friday only a sandwich meal is served.

School meals in accordance with Health and Nutrition Policy offer a wide range of balanced healthy options. Fresh fruit, water and milk are also on offer daily.

All P1-P3 children receive a free school meal. Your child will choose then what they wish for lunch first thing in the morning for that day. Menus are sent home to help you to decide with your child.

Lunches can be ordered in the classroom by your child or on I Pay Impact on line from home. A separate letter is in your pack regarding this.



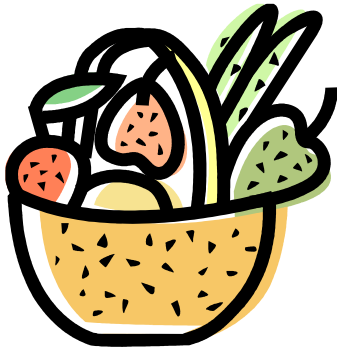
You may want to give your child a packed lunch from home which will be stored in class and taken down with your child at lunch time to the dinner hall.

All children are supervised in the hall or GP room to eat their lunch by members of staff.

Free breakfast is also available for all children p1-P3 and this is served in the dinner hall from 8.10am-8.20am.

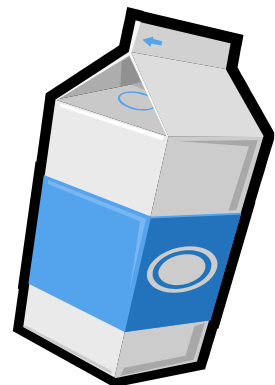
Health Promoting School

We are striving to be a Healthy school at Armadale Primary.



As part of this we offer children tuck from our Healthy Tuck Shop. This can be bought from P7 children daily.

The Scottish Government also recognise the importance of a healthy balanced diet and semi skimmed milk is available to buy. This is usually taken after playtime.



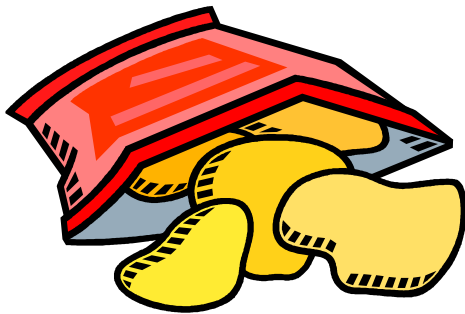
If your child does not like or is allergic to milk you can provide water which can be drunk instead.

Children can also bring a refillable water bottle which they have access to throughout the day.



What happens at playtime?

Primary 1 playtime is usually at 10.30-10.45am. On the first two mornings playtime will be from 10.15-10.30am with your Primary 7 Buddy and a member of staff. The buddies will make sure you know how to get to the toilets, what games to play and where to line up when the bell goes.



At playtime this is the time for you to eat your snack. Ideal snacks are a bag of crisps, fruit or a small biscuit.



What happens if it is raining at break time or lunch time?

If it is raining we have to have an indoor break. Your child will be supervised by a member of staff in the classroom on these occasions. Buddies are also there to lend a hand. The teacher will provide a range of activities for your child.





What do I need to bring to school?

Your child will need:

A school bag

A pencil, rubber and pencil case

A snack

A purse for lunch/trip/tuck money

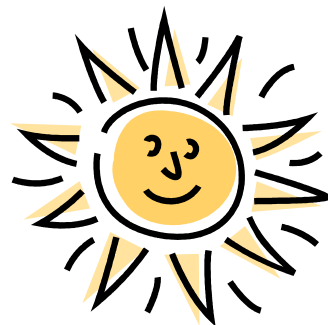
A packed lunch box

A PE kit:

Your child will need to bring a change of clothing for PE. We recommend a pair of black gym rubbers, a pair of shorts and a T shirt. These can be left in school if you wish. Please name all items of clothing. All jewellery needs to be removed before PE.



The most important item to bring is a smile because your child will really enjoy being at Armadale Primary School.





Will I be going on any educational trips?

Yes – we try to take your child on one trip each year. We also have visitors and speakers in to school for various events.



Will my family be involved with my school?

There are lots of ways in which you can be involved in the education of your child.

We have curricular and information sessions (like this) which you can attend.

We offer invitations to class assemblies, Christmas and Easter Celebrations to name a few!

Parent Helpers

We welcome any parent's keen to help out around the school. If you are interested please speak to either Mrs Ross or Ms Drummond who will be able to give you a PVG form to fill out.



Armadale Primary School Parent Council

If you are interested in joining please speak to Mrs Ross. The group meets regularly to discuss fundraising and how best to support the school.



Armadale Primary School is a very happy school and all the members of staff will be here to help your child feel safe and secure.



What if I don't feel well?

If your child is not well at school we will contact you to come and collect your child. It is for this reason that we ask you to provide us with updated contact numbers for yourselves and an emergency contact.



What should I do if I have a problem?

If your child expresses a concern or is upset about anything we urge you to let us know as soon as possible. Little problems tend to grow into big ones and we would rather help as soon as possible.

At Armadale Primary School it is our aim to make your school's day as happy and successful as possible and we have found this is best achieved by a close home/school relationship. We will make every effort to make your child's school experiences as pleasant and enjoyable as can be.



If you have any questions about any aspect of school life please ask your child's teacher or contact the office to speak to the Head Teacher Mrs Ross or Depute Head Teacher Ms Drummond and we will be very happy to discuss how we can help you. We look forward to having you join our school in August.

See what we are up to before then!

If you are interested in looking at some further information on our school before August feel free to:

follow us on Twitter:

<https://twitter.com/ArmadalePrimary>



Look at our School Website:

<https://armadaleprimary.westlothian.org.uk/>



Download our School App:

